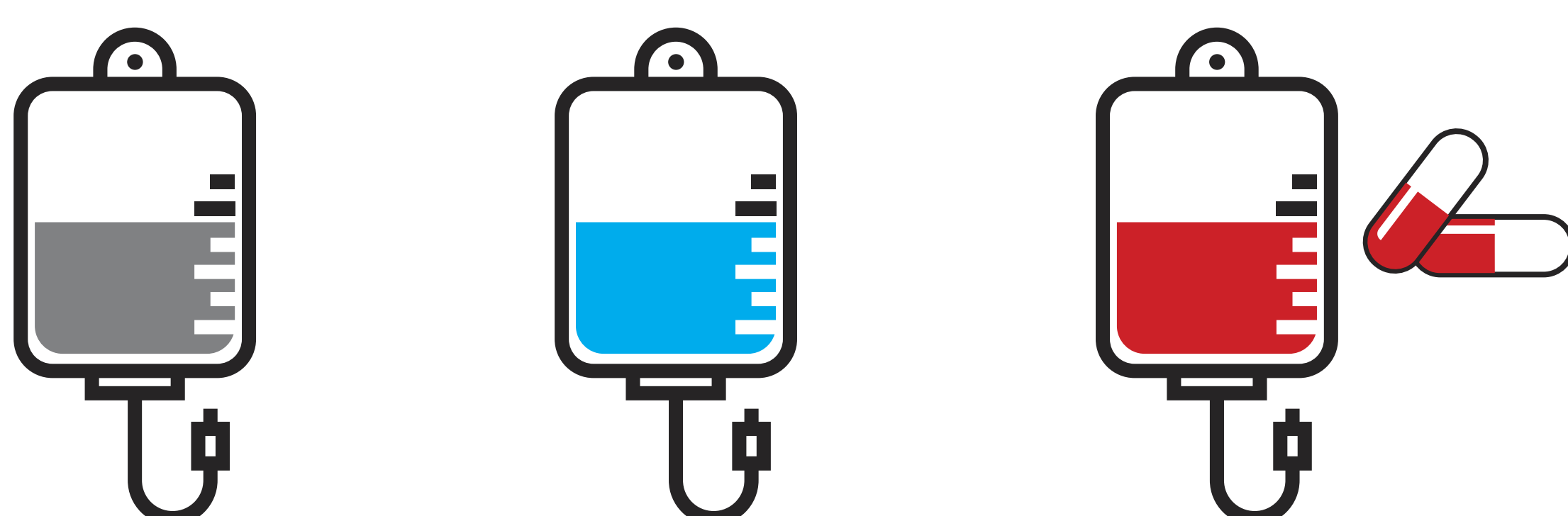


Evolving Considerations for Treatment Decision-making in LOPD

A Shift in Pompe Disease Therapy Decision-making

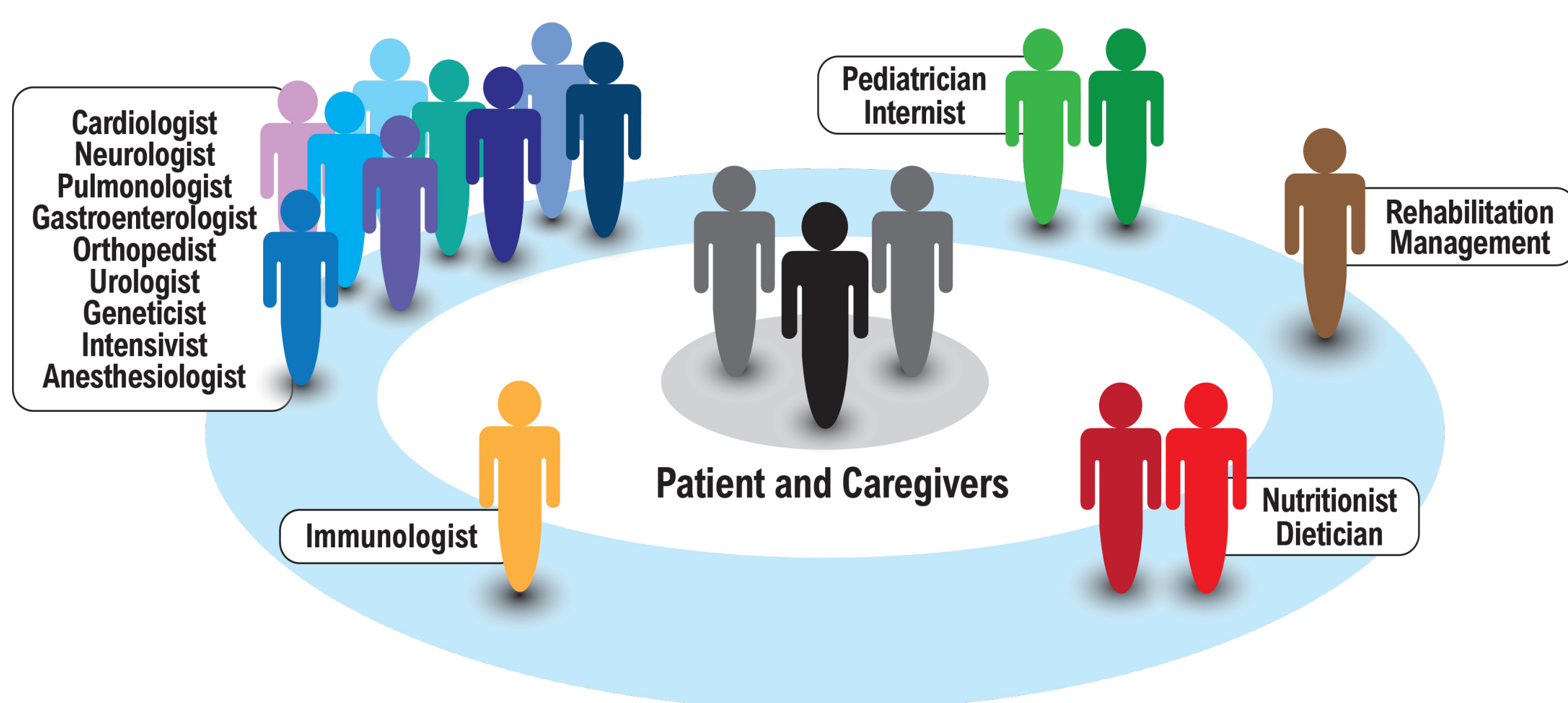
Multiple therapeutic options now available



Earlier diagnosis of LOPD via NBS



Growing role for shared decision-making



New Needs for Improving Patient Care



- Patient education materials
- Input from multidisciplinary team members
- Regular use of patient-reported outcome measures
- Improved communication strategies with patients
- Greater access to home infusion and disease monitoring

Abbreviations

ERT: enzyme replacement therapy
 NBS: newborn screening
 LOPD: late-onset Pompe disease